

MILLERTM

Make all the right connections.

ISO/Link-ACTM INSULATING LINKS

POWER LINE SAFETY



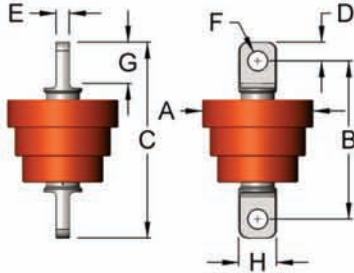
Miller Lifting Products
www.millerproducts.net
E-mail info@millersproducts.net
CALL US TOLL FREE AT: 800.733.7071

Miller ISO/Link-ACTM INSULATING LINKS

RATED TO 25kV • TESTED TO 50,000 VAC
5:1 MECHANICAL DESIGN FACTOR

INSULATING LINKS, NON SWIVELING, ISO/LINK-ACTM

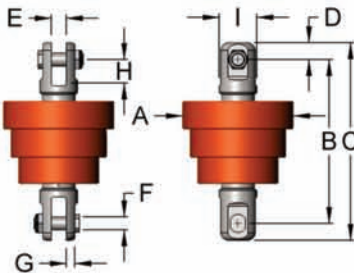
EYE TO EYE



WLL* Tons	Model	A**	B	C	D	E	F	G	H	Weight Lbs.
5	2VD2	7.38	10.50	13.00	1.25	0.88	1.28	2.75	2.50	19
10	2VE2	8.63	14.50	17.75	1.63	1.63	1.66	3.75	3.75	60
25	2VG2	11.88	19.50	24.25	2.38	2.22	2.53	5.50	5.00	150
60	2VJJ2	12.38	22.75	29.25	3.25	3.00	2.91	7.00	6.50	250

Dimensions in Inches(in), *5:1 Mech Design Factor, **Link profile varies depending on WLL

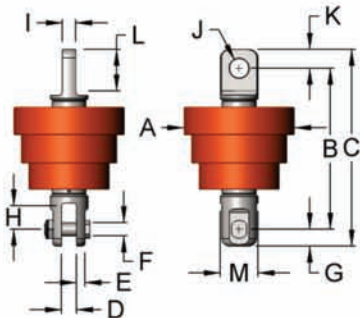
CLEVIS TO CLEVIS



WLL* Tons	Model	A**	B	C	D	E	F	G	H	I	Weight Lbs.
5	1VD1	7.38	10.88	13.13	1.13	1.00	0.88	0.56	1.56	2.50	21
10	1VE1	8.63	16.88	20.38	1.75	1.75	1.50	0.81	3.00	4.00	70
25	1VG1	11.88	21.13	25.88	2.38	2.00	2.00	1.13	3.69	5.00	160
60	1VJJ1	12.38	26.25	32.75	3.25	3.00	2.50	1.50	4.00	7.00	290

Dimensions in Inches(in), *5:1 Mech Design Factor, **Link profile varies depending on WLL

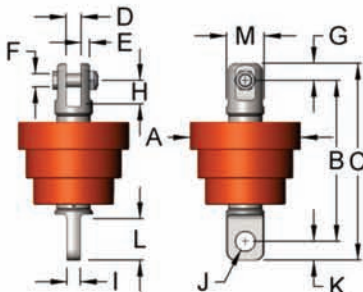
EYE TO CLEVIS



WLL* Tons	Model	A**	B	C	D	E	F	G	H	I	J	K	L	M	Weight Lbs.
5	2VD1	7.38	10.69	13.06	1.00	0.56	0.88	1.13	1.56	0.88	1.28	1.25	2.75	2.50	20
10	2VE1	8.63	15.69	19.06	1.75	0.81	1.50	1.75	3.00	1.63	1.66	1.63	3.75	4.00	65
25	2VG1	11.88	20.31	25.06	2.00	1.13	2.00	2.38	3.69	2.22	2.53	2.38	5.50	5.00	155
60	2VJJ1	12.38	24.50	31.00	3.00	1.50	2.50	3.25	4.00	3.00	2.91	3.25	7.00	7.00	270

Dimensions in Inches(in), *5:1 Mech Design Factor, **Link profile varies depending on WLL

CLEVIS TO EYE

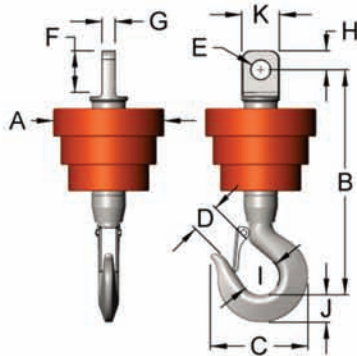


WLL* Tons	Model	A**	B	C	D	E	F	G	H	I	J	K	L	M	Weight Lbs.
5	1VD2	7.38	10.69	13.06	1.00	0.56	0.88	1.13	1.56	0.88	1.28	1.25	2.75	2.50	20
10	1VE2	8.63	15.69	19.06	1.75	0.81	1.50	1.75	3.00	1.63	1.66	1.63	3.75	4.00	65
25	1VG2	11.88	20.31	25.06	2.00	1.13	2.00	2.38	3.69	2.22	2.53	2.38	5.50	5.00	155
60	1VJJ2	12.38	24.50	31.00	3.00	1.50	2.50	3.25	4.00	3.00	2.91	3.25	7.00	7.00	270

Dimensions in Inches(in), *5:1 Mech Design Factor, **Link profile varies depending on WLL

INSULATING LINKS, NON SWIVELING, ISO/LINK-AC™

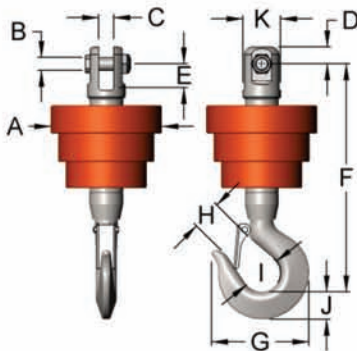
EYE TO HOOK



WLL* Tons	Model	A**	B	C	D	E	F	G	H	I	J	K	Weight Lbs.
5	2VD5	7.38	14.94	6.28	1.78	1.28	2.75	0.88	1.25	2.50	1.82	2.50	25
10	2VE5	8.63	18.39	8.34	2.63	1.66	3.75	1.63	1.63	3.25	2.60	3.75	70
25	2VG5	11.88	26.05	11.56	3.15	2.53	5.50	2.22	2.38	3.94	3.74	5.00	185
60	2VJ5	12.38	33.44	17.00	4.92	2.91	7.00	3.00	3.25	6.30	5.91	6.50	420

Dimensions in Inches(in), *5:1 Mech Design Factor, **Link profile varies depending on WLL

CLEVIS TO HOOK



WLL* Tons	Model	A**	B	C	D	E	F	G	H	I	J	K	Weight Lbs.
5	1VD5	7.38	0.88	1.00	1.13	1.56	15.06	6.28	1.78	2.50	1.82	2.50	26
10	1VE5	8.63	1.50	1.75	1.75	3.00	19.57	8.34	2.63	3.25	2.60	4.00	75
25	1VG5	11.88	2.00	2.00	2.38	3.69	26.87	11.56	3.15	3.94	3.74	5.00	190
60	1VJ5	12.38	2.50	3.00	3.25	4.00	35.20	17.00	4.92	6.30	5.91	7.00	440

Dimensions in Inches(in), *5:1 Mech Design Factor, **Link profile varies depending on WLL

CUSTOM APPLICATIONS



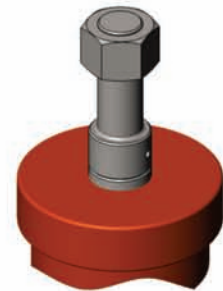
- Wire Rope Thimble



- Oversized Clevis and Pin for use with Synthetic Slings



- Swivel Hoist Ring



- Threaded Stud Adaptor with Nut



- Forged Eye Nut

- Other configurations available by request. See the MILLER General Catalog for ISO-Blocks and ISO/Link AC™ assemblies using the MILLER Y-Link Angular Contact Swivel.

Rated Voltage Maximum	25 kV
Test Voltage Maximum*	50 kv
Leakage current (dry)	2.5mA avg. at 25kV
Operating Temp	-50°F to 150°F
<ul style="list-style-type: none"> For required annual recertification testing only. Do not use beyond rated max. voltage. The ISO/Link-AC is not lightning-proof. 	

Standard ISO/Link-AC Model Number by Type And Working Load Limit (WLL) in Tons				
Type	5T	10T	25T	60T
Eye-Eye	2VD2	2VE2	2VG2	2VJJ2
Jaw-Jaw	1VD1	1VE1	1VG1	1VJJ1
Eye-Jaw	2VD1	2VE1	2VG1	2VJJ1
Jaw-Eye	1VD2	1VE2	1VG2	1VJJ2
Eye-Hook	2VD5	2VE5	2VG5	2VJJ5
Jaw-Hook	1VD5	1VE5	1VG5	1VJJ5

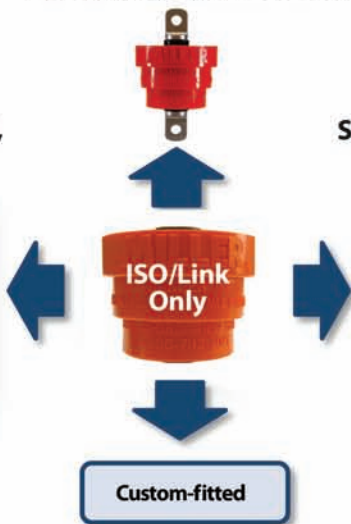
Design safety factor for all sizes is 5:1 (mechanical)
 Proof load test level for all sizes is WLL x 2 (Load test certificate available)
 See pp. 2-3 for weights and dimensions (inches) by ISO/Link-AC Model

Standard eye, jaw, or hook

Block-mounted, fixed hook



Swivel-mounted, eye hook



- Patented Miller Design
- Standard eye, jaw, hook combinations -this brochure
- See Miller general catalog for swivel-mounted and load block-mounted ISO/Links
- Also available as ISO/Link only, or fitted with custom connections

INSPECTION FREQUENCY	INSPECTION ITEM	WHAT TO CHECK FOR	APPROPRIATE ACTION TO TAKE
EACH USE	CLEANLINESS VISUAL	DIRT, MUD, <u>ANY</u> CONTAMINANT	BRUSH AND WIPE 100% OF EXTERIOR SURFACES <u>CLEAN</u> WITH DAMP CLOTH AND THEN DRY CLOTH. ELECTRICAL PERFORMANCE OF INSULATING LINK DEGRADES WHEN SURFACE IS DIRTY.
DAILY	SET SCREWS	TIGHTNESS	ASSURE SETSCREWS WHICH SECURE UPPER AND LOWER FITTINGS ARE TIGHT AND STAKED.
DAILY	MECHANICAL INTEGRITY POLYMER	CRACKS OR OTHER DEFORMATION	PRESENCE OF ANY CRACKS OR DEFORMATION OF THE ORANGE EXTERIOR POLYMER JACKET REQUIRES THAT THE LINK BE REMOVED FROM SERVICE IMMEDIATELY. *
DAILY	MECHANICAL INTEGRITY STRUCTURAL	CRACKS OR OTHER DEFORMATION	PRESENCE OF ANY CRACKS OR DEFORMATION OF METALLIC AREAS REQUIRES THAT THE LINK BE REMOVED FROM SERVICE IMMEDIATELY. *
ANNUALLY	ELECTRICAL INTEGRITY	DIELECTRIC PERFORMANCE	PERFORM ANNUAL HIGH VOLTAGE TEST WITH CERTIFIED TEST REPORT BY UNIT SERIAL NUMBER. **

* See www.millerproducts.net for additional information on mechanical inspection and disposition
 ** Annual electrical recertification testing is offered by Miller. User can also elect to make direct arrangements for annual recertification testing. See www.millerproducts.net for full information on recertification testing.