

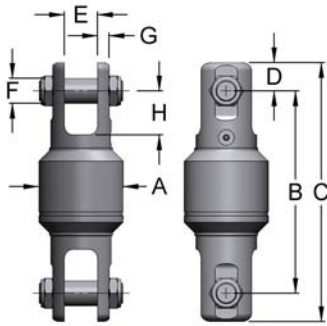
SWIVELS- HD-LINK, HEAVY DUTY (ANGULAR CONTACT)



- Heavy Duty (HD) barrel for maximized swivel life in rough conditions
- Thick-walled barrel protects bearings and seals from shock and dust
- Equipped with low torque angular contact ball bearings like Miller Y-Link
- Designed for high impact, abrasive environments as found in demolition, quarries, ect.
- Machined from solid forged alloy steel bar
- Zinc plating inside and out for effective protection against corrosion
- Grease fitting allows for easy, frequent lubrication
- For Working Loads from 5 to 35 tons and wire rope sizes 5/8" to 1 1/2"
- Higher capacities are available upon request

For demolition, the swivel selected should be one size larger than the normally recommended size, should be lubricated daily, and should be installed 4-6 feet above the breaking ball overhaul weight.

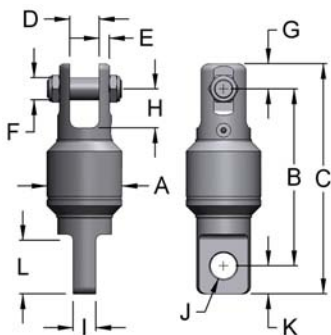
CLEVIS TO CLEVIS - TYPE 131



WLL* Tons	Model Number	Rope Size	A	B	C	D	E	F	G	H	Weight Lbs.
5	D-131	5/8	3.50	7.94	10.19	1.13	1	.88	.56	1.56	12
8.5	EE-131	3/4	4.00	9.63	12.31	1.34	1.56	1.19	.56	2.09	19.75
15	GG-131	1	5.00	14	17.5	1.75	1.75	1.5	.81	3.5	50
35	HH-131	1 1/2	6.00	15.94	20.69	2.38	2	2	1.13	3.69	99

* Design factor 5:1

CLEVIS TO EYE - TYPE 132

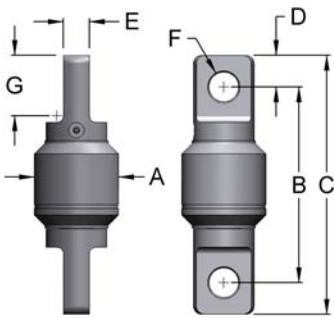


WLL* Tons	Model Number	Rope Size	A	B	C	D	E	F	G	H	I	J	K	L	Weight Lbs.
5	D-132	5/8	3.50	7.88	10.19	1.00	0.56	.88	1.13	1.56	1.00	1.28	1.19	2.5	11.38
8.5	EE-132	3/4	4.00	9.5	12.34	1.56	0.56	1.19	1.34	2.09	1.25	1.41	1.5	3.13	19.75
10	G-132	7/8	5.00	13.94	17.5	1.75	0.81	1.5	1.75	3.5	1.72	1.66	1.81	4.66	49
15	GG-132	1	5.00	13.63	17.5	1.75	0.81	1.5	1.75	3.5	2.00	2.03	2.13	4.91	50
35	HH-132	1 1/2	6.00	16.44	21.19	2.00	1.13	2	2.38	3.69	2.25	2.31	2.38	5.25	96

* Design factor 5:1

SWIVELS- HD-LINK, HEAVY DUTY (ANGULAR CONTACT)

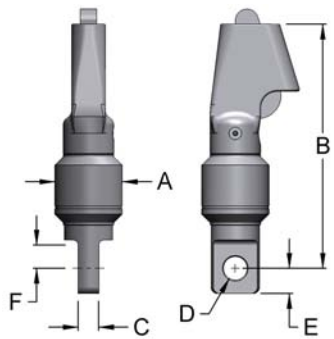
EYE TO EYE - TYPE 232



WLL* Tons	Model Number	Rope Size	A	B	C	D	E	F	G	Weight Lbs.
5	D-232	5/8	3.50	7.69	10.19	1.19	1	1.28	2.50	11
8.5	EE-232	3/4	4.00	9.31	12.34	1.50	1.25	1.41	3.13	19.25
10	G-232	7/8	5.00	13.88	17.5	1.81	1.72	1.66	4.66	47
15	GG-232	1	5.00	13.25	17.5	2.13	2	2.03	4.91	48
35	HH-232	1.5	6.00	16.5	21.19	2.38	2.25	2.31	5.25	93

* Design factor 5:1

WEDGE TO EYE - TYPE 732



WLL* Tons	Model Number	Rope Size	A	B	C	D	E	F	Weight Lbs.
5	D-732	1/2, 5/8	3.50	12.5	1	1.28	1.19	1.31	15
8.5	EE-732	1/2, 5/8, 3/4	4.00	14.25	1.25	1.41	1.5	1.63	25
10	G-732	3/4, 7/8, 1	5.00	19.69	1.72	1.66	1.81	2.84	55
15	GG-732	3/4, 7/8, 1	5.00	19.38	2	2.03	2.13	2.78	56
25	H-732	1 1/8, 1 1/4	6.00	25.44	2.25	2.31	2.38	2.88	119
35	HH-732	1 1/8, 1 1/4	6.00	25.44	2.25	2.31	2.38	2.88	119

* Design factor 5:1

MILLER

Load Handling SOLUTIONS

- ▶ Swivels
- ▶ Forged Hooks
- ▶ Blocks
- ▶ Sheaves

SCR Pull-in Swivel
375 metric tons working load

www.millerproducts.net