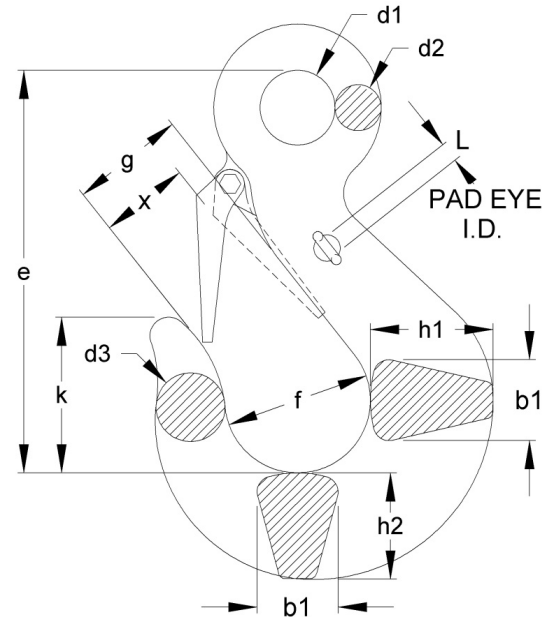
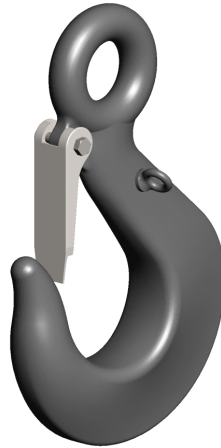


# FORGED EYE HOOKS- DIN 7540 GRADE 80



DIN is the German Institute for Standardization (Deutsches Institut für Normung) and has been based in Berlin since 1917. DIN has historically developed the detailed and exacting standards used in German engineering and is the body that represents Germany in international standards organizations.

- Forged from high-strength alloy steel 34CrNiMo6V
- Safe Working Loads from 40 to 400 metric tons
- Design factor 4:1 to ultimate strength
- Proof load is 2.5 times Safe Working Load
- Includes safety latch
- ROV modification (addition of pad eyes) available upon request
- Higher load capacities available upon request



## Metric Dimensions

Model Number	Capacity (SWL) Metric Tons	MBL Metric ton	b1	d1	d1 Tolerance	d2	d3	e	f	g	h1	h2	K	L	X	Weight Kg
EH34	40	160	78	72	+1.9 / -3.7	44	66	388	140	109	118	103	80	19	90	31.5
EH35	50	200	89	84	+1.9 / -3.7	50	74	442	158	124	135	116	90	19	103	46
EH36	63	250	99	90	+2.3 / -4.7	56	83	494	176	138	151	130	101	19	114	63
EH37	80	320	110	102	+2.3 / -4.7	63	93	610	198	155	168	145	113	19	131	80
EH38	100	400	125	116	+/- 5.0	74	120	650	225	175	195	172	133	19	147	125
EH39	150	600	140	130	+/- 6.5	86	140	765	250	200	225	199	160	19	166	250
EH40	200	800	160	150	+/- 7.5	102	161	850	275	225	260	237	195	25	*	365
EH41	250	1000	180	170	+/- 8.5	120	195	928	310	255	290	269	210	25	*	515
EH42	300	1200	200	190	+/- 9.5	140	223	1052	350	290	330	310	240	32	*	730
EH43	400	1600	240	210	+/- 10.5	170	240	1195	400	320	380	345	270	32	*	1055

## Imperial Dimensions

Model Number	Capacity (SWL) Short Tons	MBL Short ton	b1	d1	d1 Tolerance	d2	d3	e	f	g	h1	h2	k	L	X	Weight Lbs.
EH34	44	176	3.07	2.83	+.07 / -.14	1.73	2.6	15.28	5.51	4.29	4.65	4.06	3.15	.75	3.54	69
EH35	55	220	3.5	3.31	+.07 / -.14	1.97	2.91	17.4	6.22	4.88	5.31	4.57	3.54	.75	4.06	102
EH36	69	275	3.9	3.54	+.09 / -.18	2.2	3.27	19.45	6.93	5.43	5.94	5.12	3.98	.75	4.49	139
EH37	88	353	4.33	4.02	+.09 / -.18	2.48	3.66	24.02	7.88	6.10	6.61	5.71	4.45	.75	5.16	176
EH38	110	441	4.92	4.57	+/- .19	2.91	4.72	25.59	8.86	6.89	7.68	6.77	5.24	.75	5.79	276
EH39	165	661	5.51	5.12	+/- .25	3.39	5.51	30.12	9.84	7.87	8.86	7.83	6.3	.75	6.54	551
EH40	220	882	6.3	5.91	+/- .29	4.02	6.34	33.46	10.83	8.86	10.24	9.33	7.68	.98	*	805
EH41	276	1102	7.09	6.69	+/- .33	4.72	7.68	36.54	12.2	10.04	11.42	10.59	8.27	.98	*	1135
EH42	331	1322	7.87	7.48	+/- .37	5.51	8.78	41.42	13.78	11.42	12.99	12.2	9.45	1.26	*	1609
EH43	441	1764	8.27	8.27	+/- .41	6.69	9.45	47.05	15.75	12.6	14.96	13.58	10.63	1.26	*	2326

- Except where otherwise noted, dimensional tolerances for hooks through model EH37 are approximately ±5%, and increase somewhat for hooks larger than model EH37. Contact Miller for detailed tolerance data.
  - Load capacities indicated are for operating temperatures between -40°C and 200°C (-40°F and 392°F). Outside this range check with Miller for reduced capacity limits.
- \* x dimension please inquire.